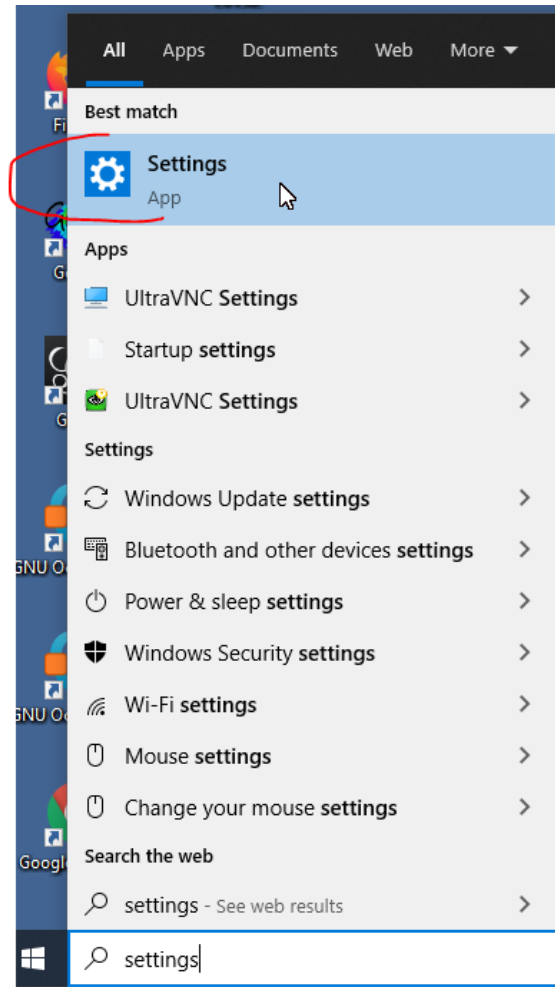


VPN creating, VPN and Remote Desktop (RDP) connecting to FME GUT

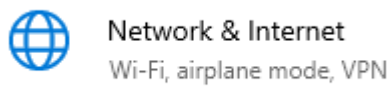
VPN – Secured network connection to FME LAN network

Remote Desktop – a service that allows you to connect to a specific computer in the computer lab

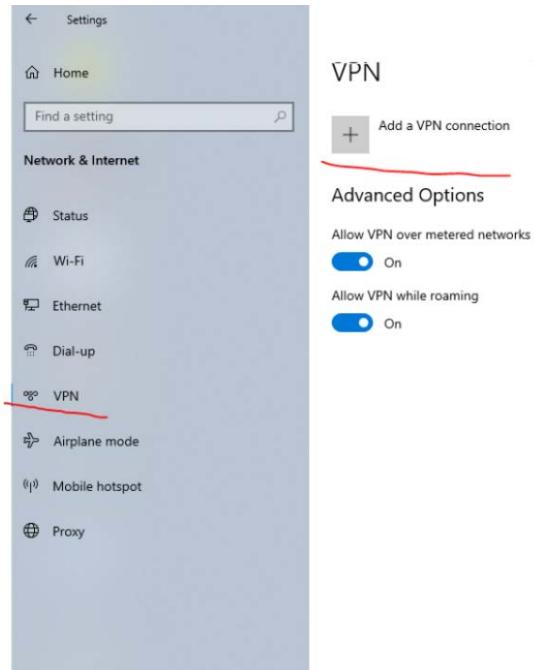
1. Enter the system Settings



Next Network & Internet



Choose VPN -> Add VPN connection

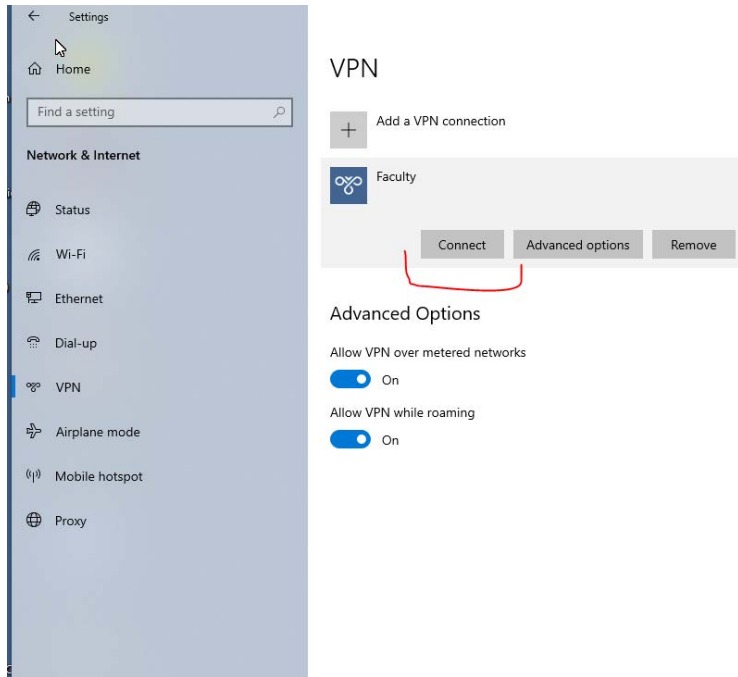


2. Fill in the form with the data provided below. Username and password will be provided on email.

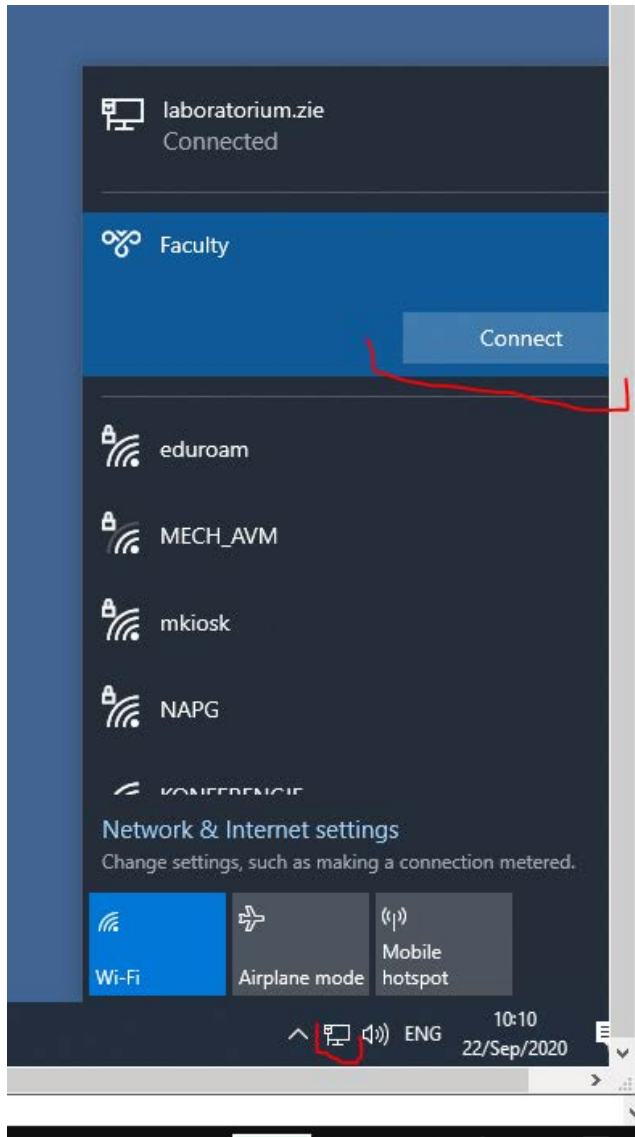
The image shows a screenshot of the 'Edit VPN connection' form in Windows. The form has a blue background and contains the following fields and options:

- Connection name:** A text input field containing 'Faculty'.
- Server name or address:** A text input field containing 'vpn.zie.pg.gda.pl'.
- VPN type:** A dropdown menu set to 'Point to Point Tunneling Protocol (PPTP)'.
- Type of sign-in info:** A dropdown menu set to 'User name and password'.
- User name (optional):** An empty text input field.
- Password (optional):** An empty text input field.
- Remember my sign-in info:** An unchecked checkbox.

3. Find your VPN connection in Settings panel and Connect

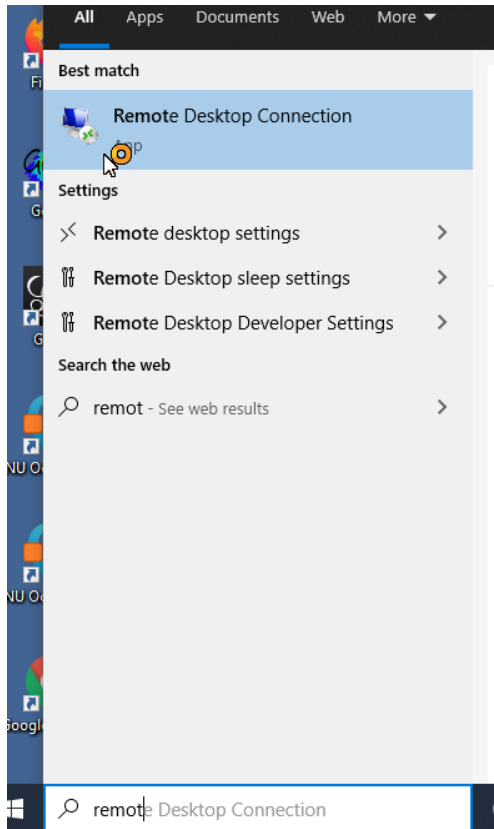


Or find Network tray icon and then click Connect



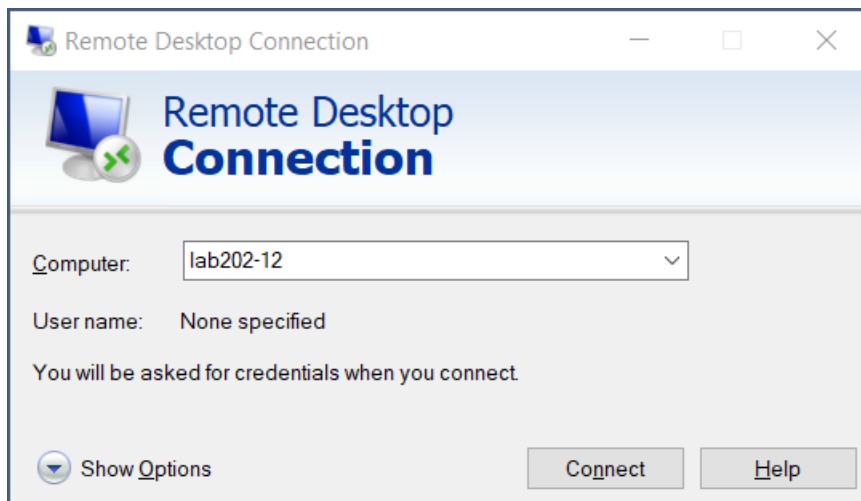
4. After establishing the connection, it is possible to use the "Remote desktop" service

We find "Remote Desktop Connection" in the Windows Start menu



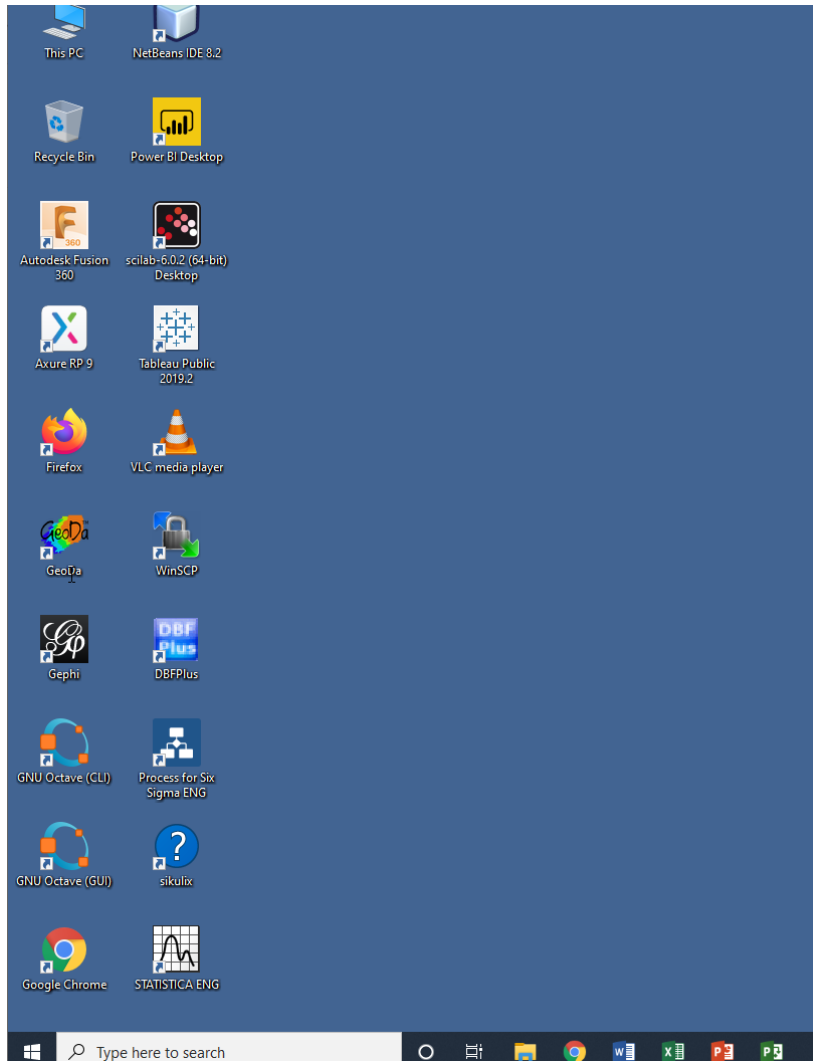
5. Enter the name (or computer IP in case of problem) of the required computer (the list of computers is not included in the manual).

Click Connect



Enter your login and password

6. After successful login, you can see the desktop of the remote computer.



7. After finishing work you MUST log out (START icon).

